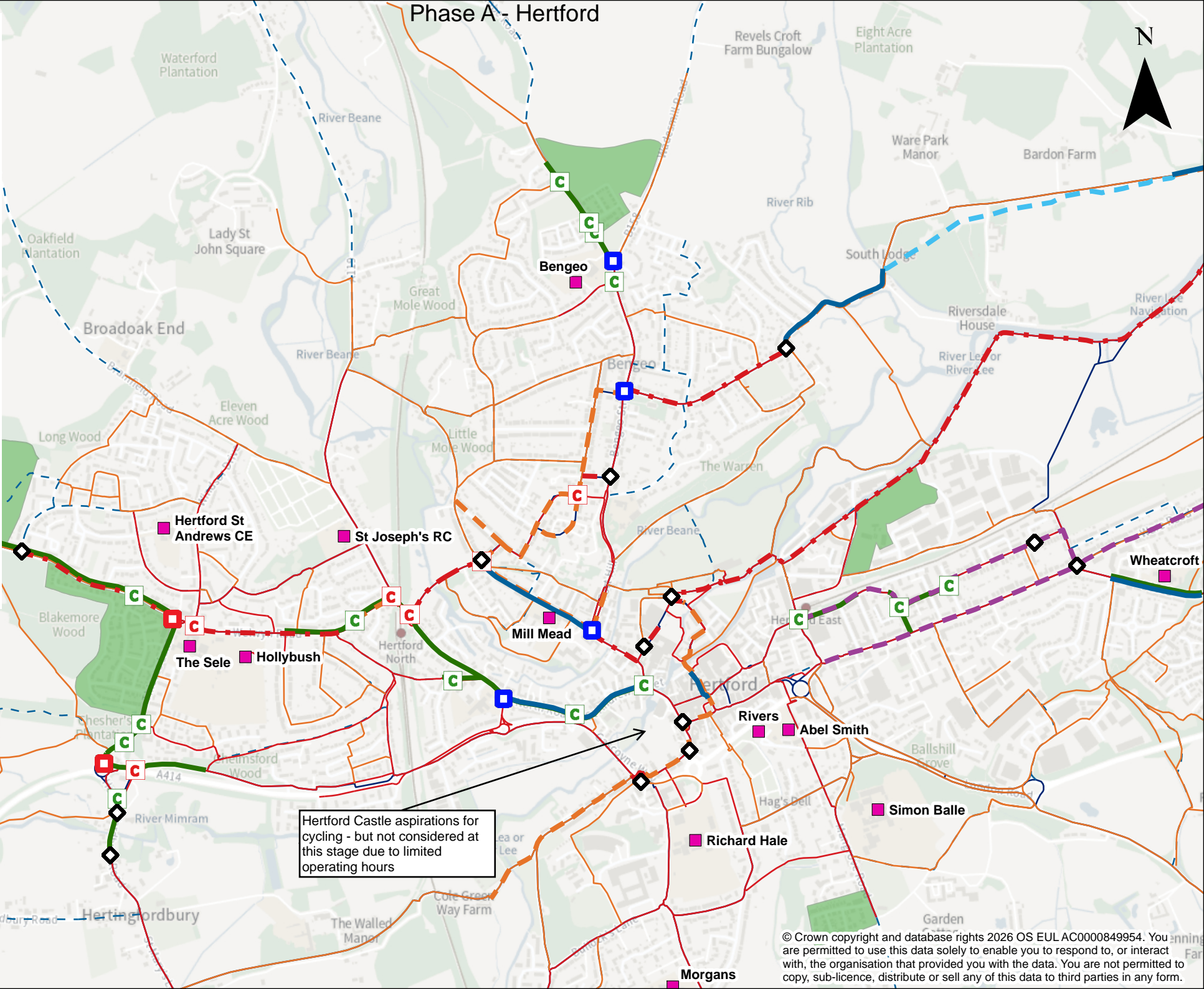


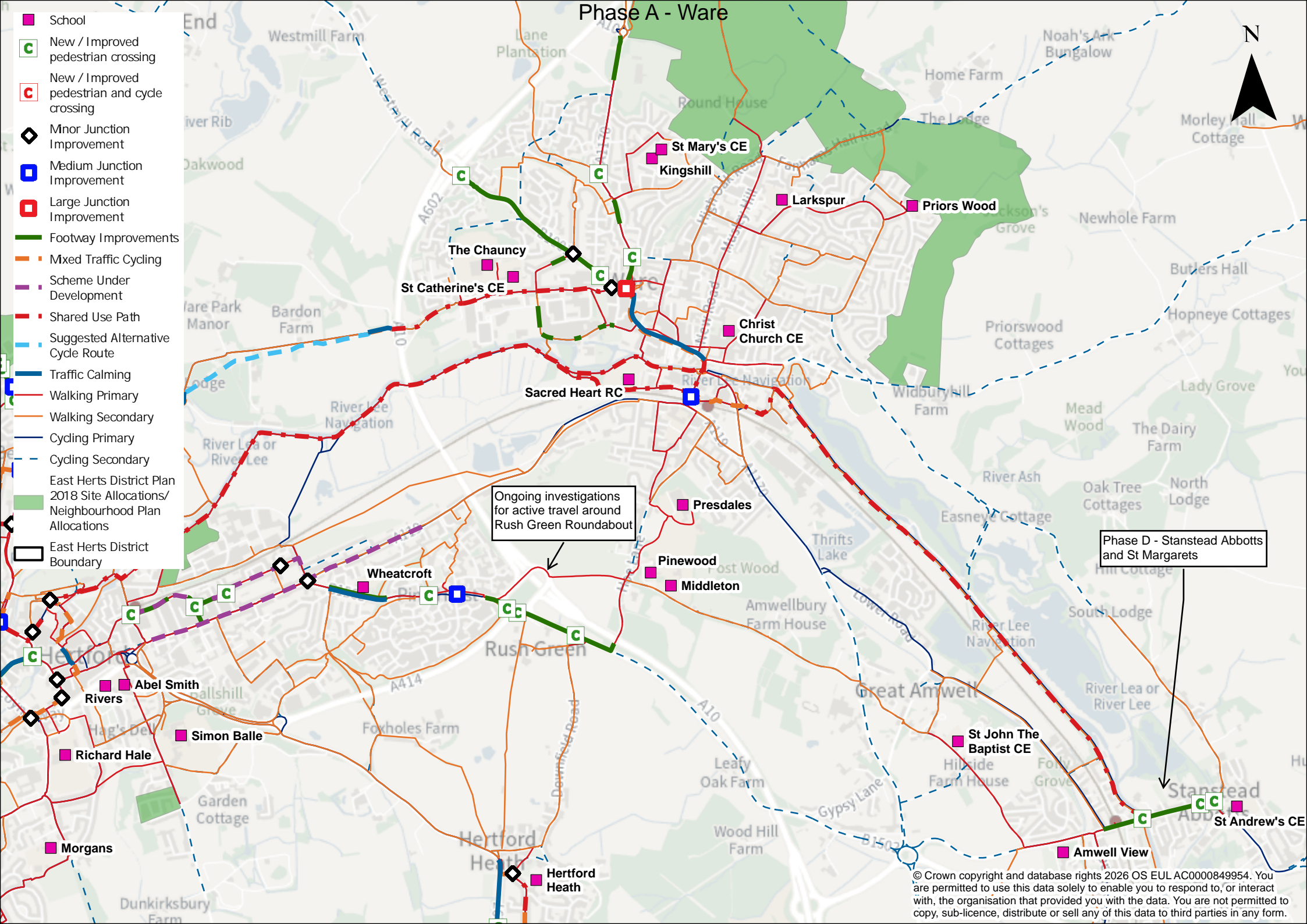
Phase A - Hertford



- School
- C New / Improved pedestrian crossing
- C New / Improved pedestrian and cycle crossing
- ◇ Minor Junction Improvement
- Medium Junction Improvement
- Large Junction Improvement
- Footway Improvements
- Mixed Traffic Cycling
- Scheme Under Development
- Shared Use Path
- Suggested Alternative Cycle Route
- Traffic Calming
- Walking Primary
- Walking Secondary
- Cycling Primary
- Cycling Secondary
- East Herts District Plan 2018 Site Allocations/ Neighbourhood Plan Allocations
- East Herts District Boundary



Hertford Castle aspirations for cycling - but not considered at this stage due to limited operating hours



- School
- C New / Improved pedestrian crossing
- C New / Improved pedestrian and cycle crossing
- ◊ Minor Junction Improvement
- ◻ Medium Junction Improvement
- ◻ Large Junction Improvement
- Footway Improvements
- Mixed Traffic Cycling
- Scheme Under Development
- - - Shared Use Path
- - - Suggested Alternative Cycle Route
- Traffic Calming
- Walking Primary
- Walking Secondary
- Cycling Primary
- - - Cycling Secondary
- East Herts District Plan 2018 Site Allocations/Neighbourhood Plan Allocations
- East Herts District Boundary

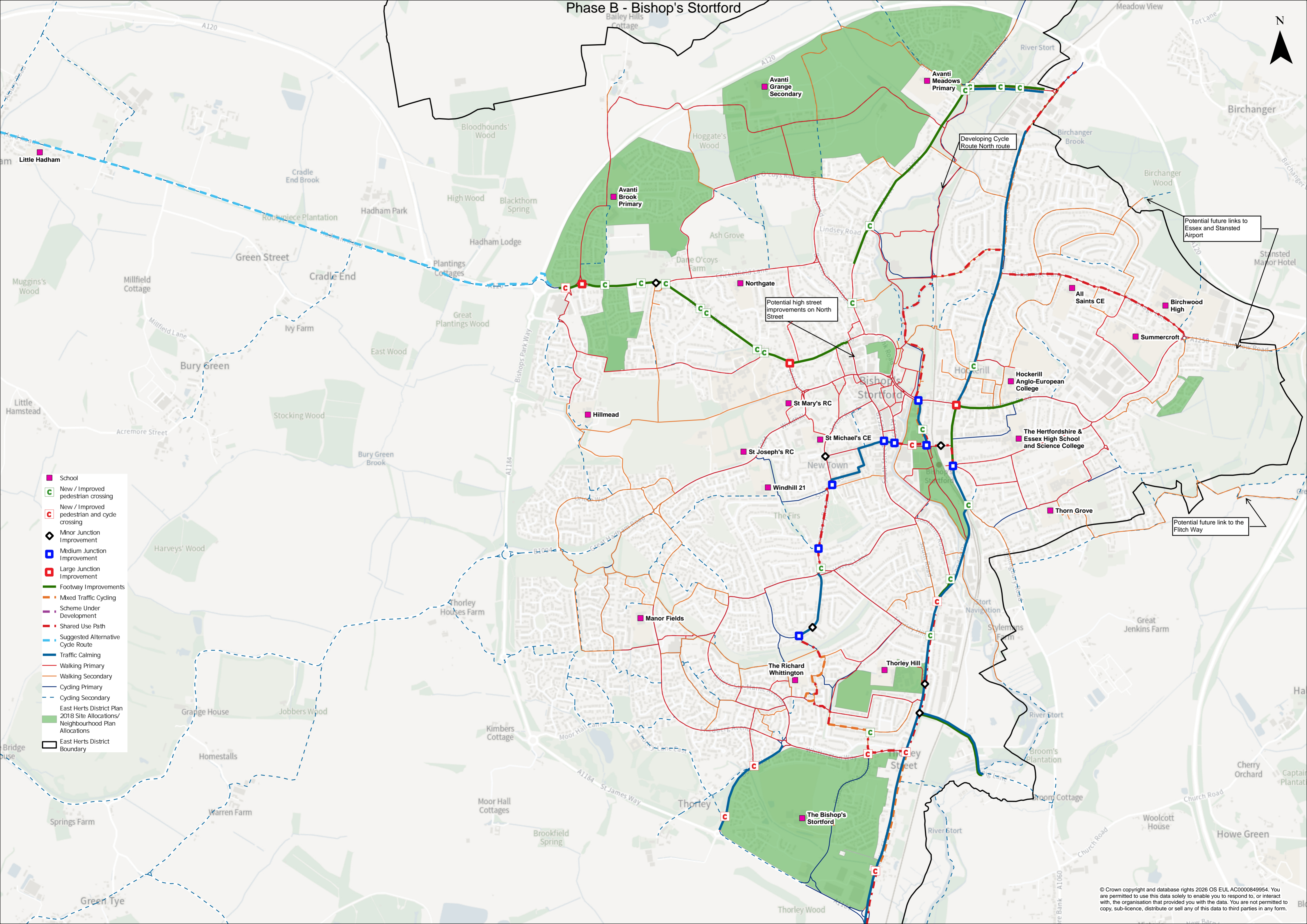
Phase A - Ware



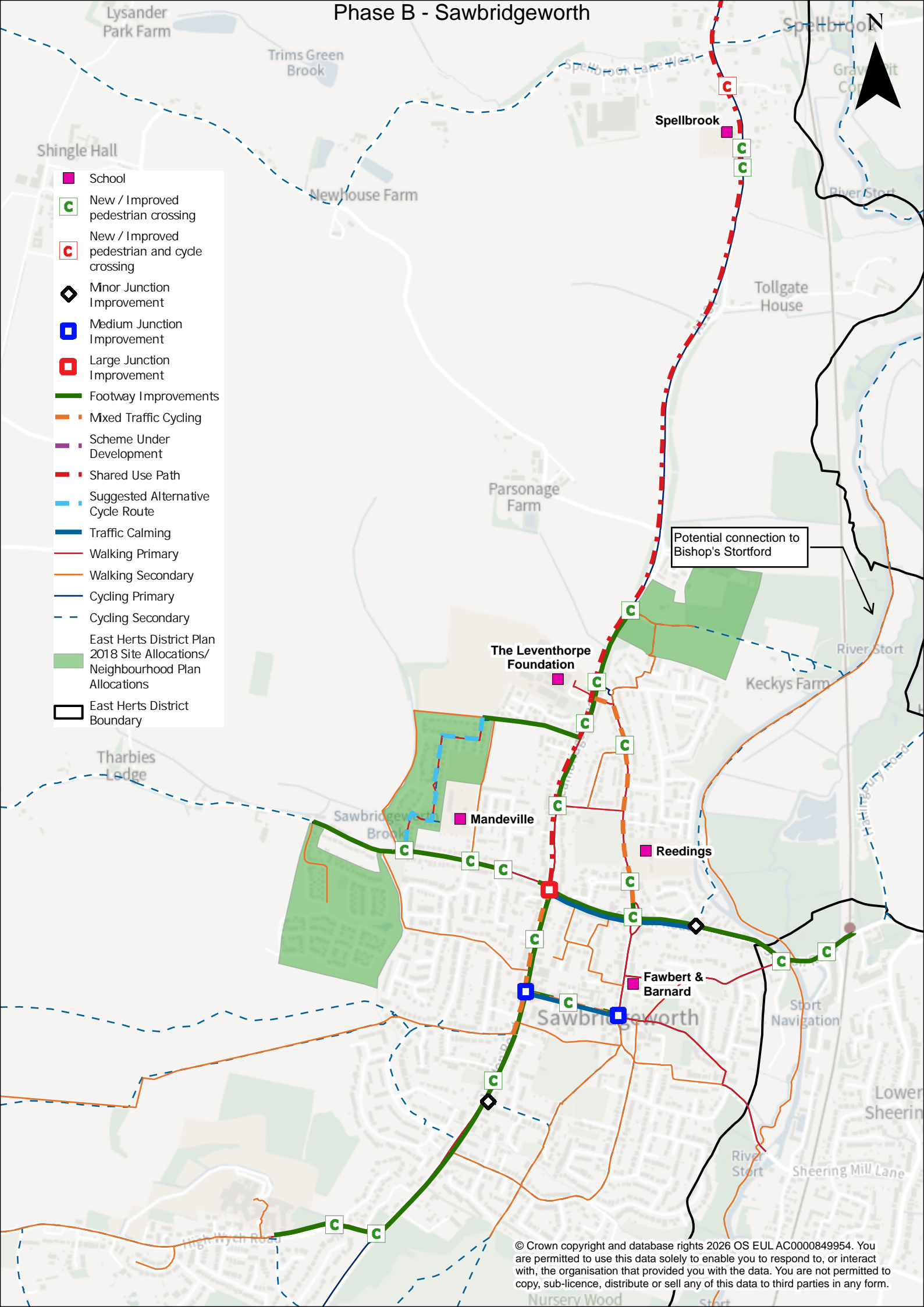
Ongoing investigations for active travel around Rush Green Roundabout

Phase D - Stanstead Abbots and St Margarets

Phase B - Bishop's Stortford



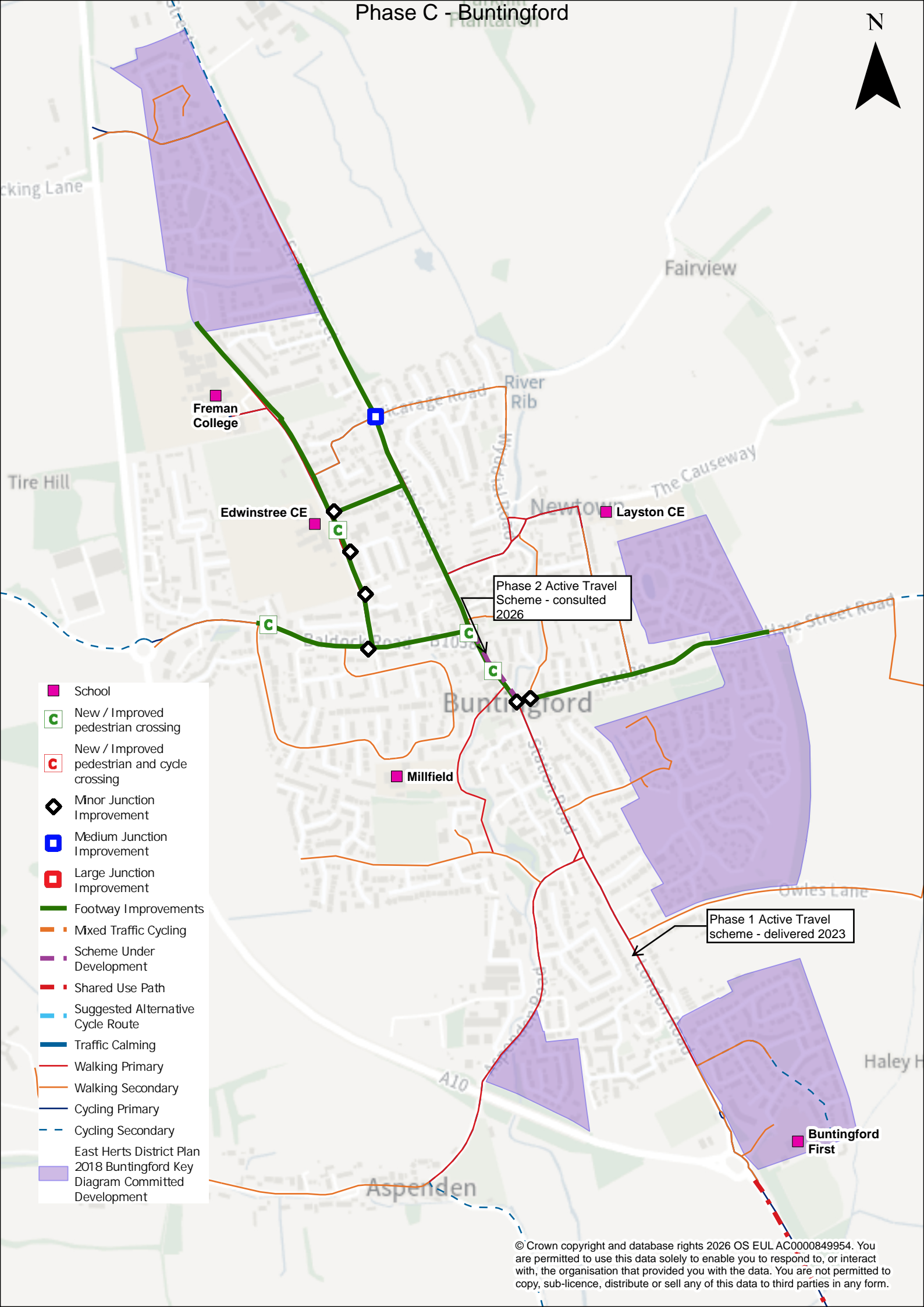
Phase B - Sawbridgeworth



- School
- New / Improved pedestrian crossing
- New / Improved pedestrian and cycle crossing
- Minor Junction Improvement
- Medium Junction Improvement
- Large Junction Improvement
- Footway Improvements
- Mixed Traffic Cycling
- Scheme Under Development
- Shared Use Path
- Suggested Alternative Cycle Route
- Traffic Calming
- Walking Primary
- Walking Secondary
- Cycling Primary
- Cycling Secondary
- East Herts District Plan 2018 Site Allocations/ Neighbourhood Plan Allocations
- East Herts District Boundary

Potential connection to Bishop's Stortford

Phase C - Buntingford



- School
- C New / Improved pedestrian crossing
- C New / Improved pedestrian and cycle crossing
- ◊ Minor Junction Improvement
- Medium Junction Improvement
- Large Junction Improvement
- Footway Improvements
- Mixed Traffic Cycling
- Scheme Under Development
- Shared Use Path
- - - Suggested Alternative Cycle Route
- Traffic Calming
- Walking Primary
- Walking Secondary
- Cycling Primary
- - - Cycling Secondary
- East Herts District Plan 2018 Buntingford Key Diagram Committed Development

Phase 2 Active Travel Scheme - consulted 2026

Phase 1 Active Travel scheme - delivered 2023

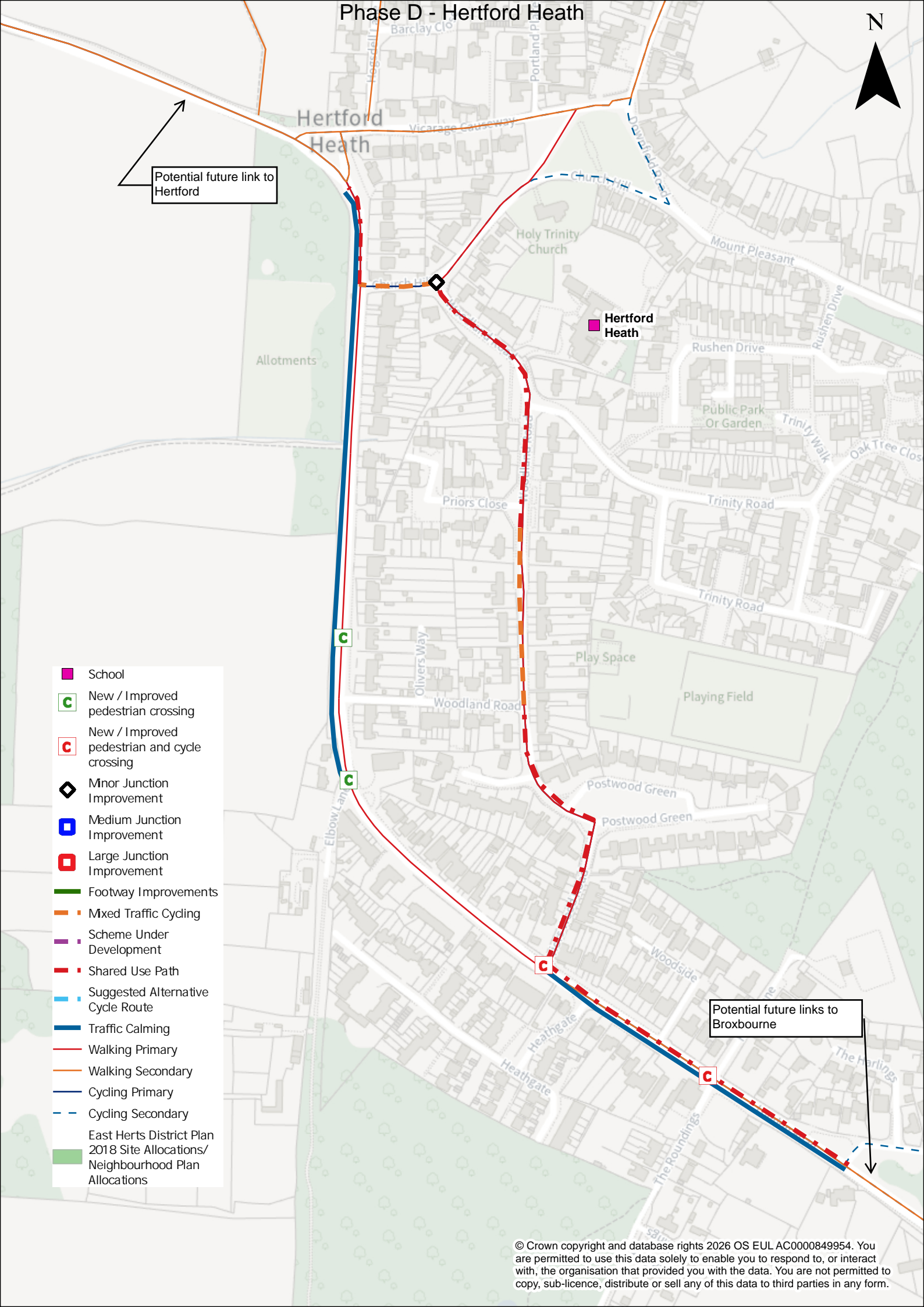
Phase D - Hertford Heath



Potential future link to Hertford

Potential future links to Broxbourne

- School
- New / Improved pedestrian crossing
- New / Improved pedestrian and cycle crossing
- Minor Junction Improvement
- Medium Junction Improvement
- Large Junction Improvement
- Footway Improvements
- Mixed Traffic Cycling
- Scheme Under Development
- Shared Use Path
- Suggested Alternative Cycle Route
- Traffic Calming
- Walking Primary
- Walking Secondary
- Cycling Primary
- Cycling Secondary
- East Herts District Plan 2018 Site Allocations/
Neighbourhood Plan Allocations



Phase D - Hunsdon

N



- School
- New / Improved pedestrian crossing
- New / Improved pedestrian and cycle crossing
- Minor Junction Improvement
- Medium Junction Improvement
- Large Junction Improvement
- Footway Improvements
- Mixed Traffic Cycling
- Scheme Under Development
- Shared Use Path
- Suggested Alternative Cycle Route
- Traffic Calming
- Walking Primary
- Walking Secondary
- Cycling Primary
- Cycling Secondary
- East Herts District Plan 2018 Site Allocations/
Neighbourhood Plan Allocations

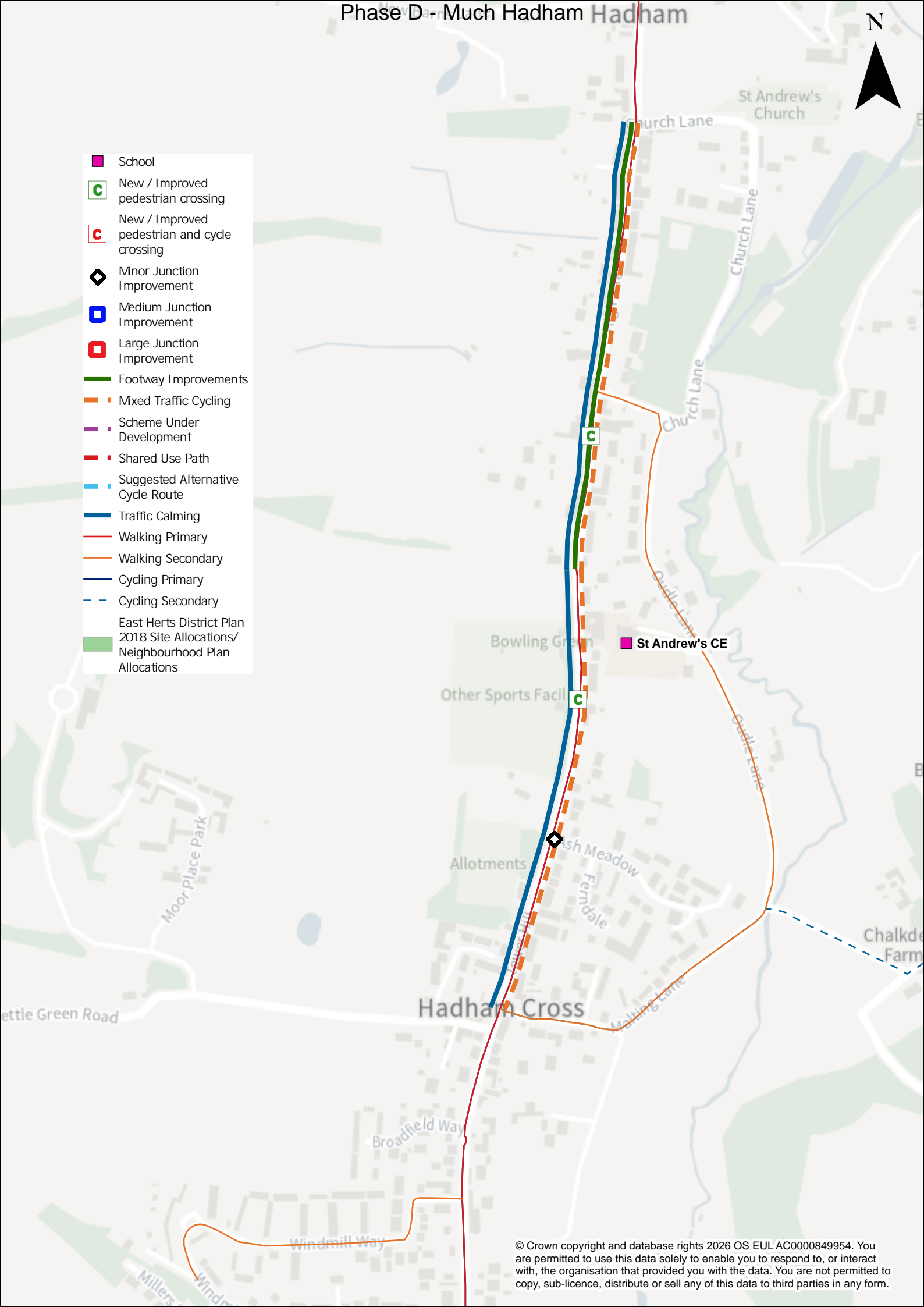


Phase D - Much Hadham Hadham

N

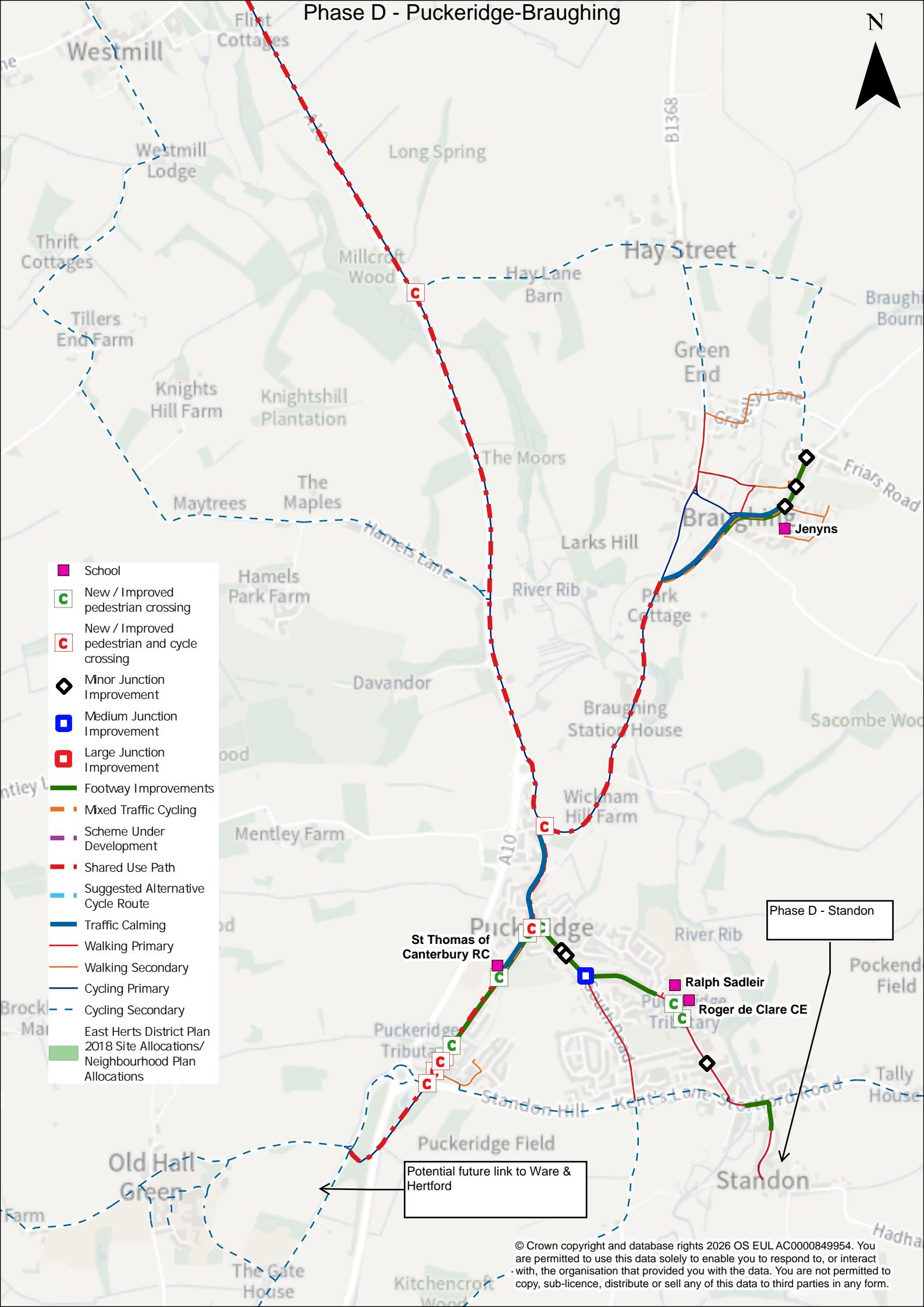


- School
- New / Improved pedestrian crossing
- New / Improved pedestrian and cycle crossing
- Minor Junction Improvement
- Medium Junction Improvement
- Large Junction Improvement
- Footway Improvements
- Mixed Traffic Cycling
- Scheme Under Development
- Shared Use Path
- Suggested Alternative Cycle Route
- Traffic Calming
- Walking Primary
- Walking Secondary
- Cycling Primary
- Cycling Secondary
- East Herts District Plan 2018 Site Allocations/
Neighbourhood Plan Allocations



Phase D - Puckeridge-Braughing

N



- School
- New / Improved pedestrian crossing
- New / Improved pedestrian and cycle crossing
- Minor Junction Improvement
- Medium Junction Improvement
- Large Junction Improvement
- Footway Improvements
- Mixed Traffic Cycling
- Scheme Under Development
- Shared Use Path
- Suggested Alternative Cycle Route
- Traffic Calming
- Walking Primary
- Walking Secondary
- Cycling Primary
- Cycling Secondary
- East Herts District Plan 2018 Site Allocations/
Neighbourhood Plan Allocations

Phase D - Standon

St Thomas of Canterbury RC

Ralph Sadleir
Roger de Clare CE

Potential future link to Ware & Hertford

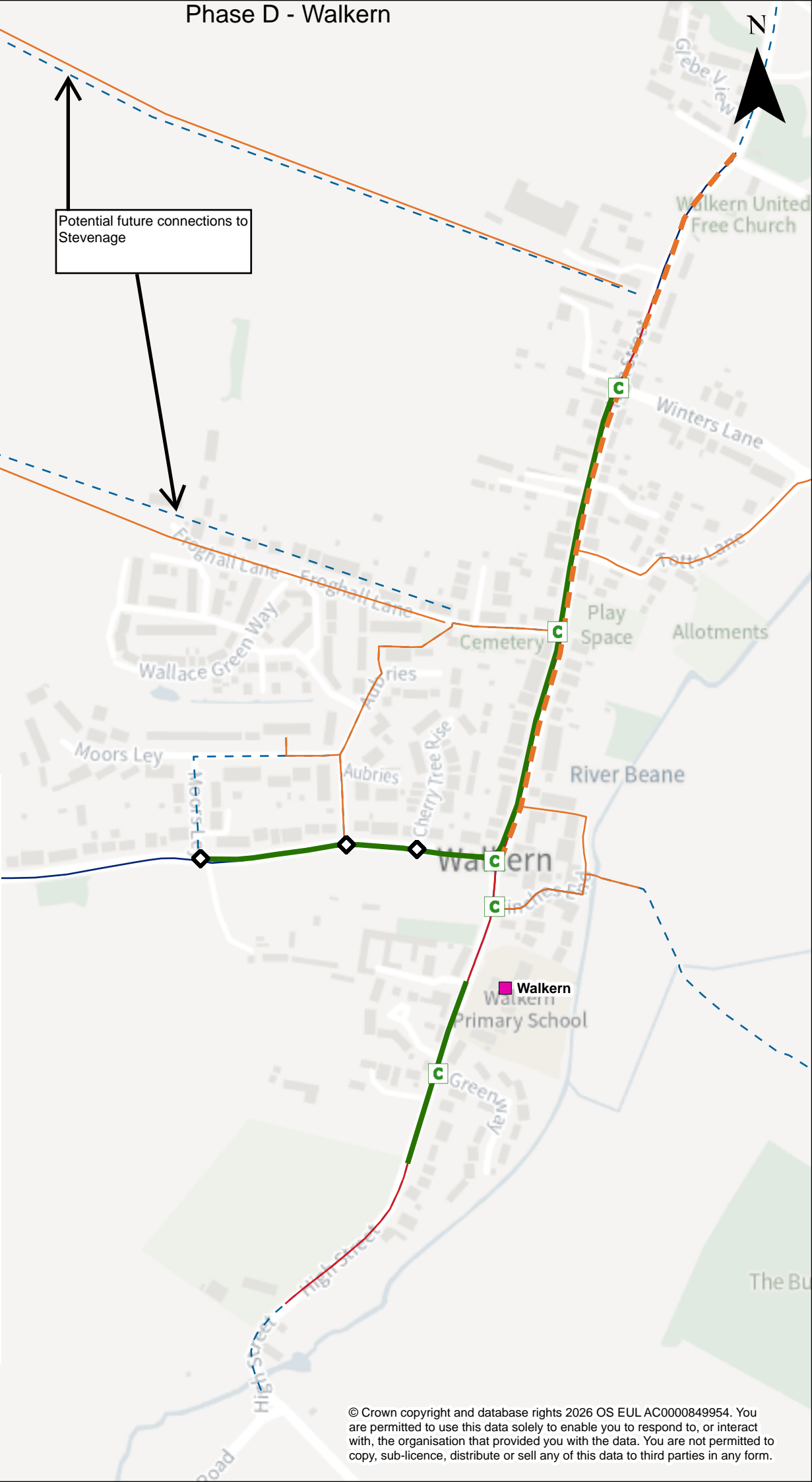
Phase D - Walkern



Potential future connections to Stevenage



- School
- C New / Improved pedestrian crossing
- C New / Improved pedestrian and cycle crossing
- ◊ Minor Junction Improvement
- Medium Junction Improvement
- Large Junction Improvement
- Footway Improvements
- Mixed Traffic Cycling
- Scheme Under Development
- Shared Use Path
- - - Suggested Alternative Cycle Route
- Traffic Calming
- Walking Primary
- Walking Secondary
- Cycling Primary
- - - Cycling Secondary
- East Herts District Plan
- 2018 Site Allocations/ Neighbourhood Plan Allocations



Phase D - Watton-at-Stone

N



Potential future link to Stevenage

A602

Beane Road

Commas Road

Great Innings North

Great Innings

Hazeldell

Watton at Stone

Rivershill

Play Space

Moorymead Close

Hazeldell

Hollywell

Watton-at-Stone

Mooney Fields

Watton at Stone
Watton-at-Stone Primary and Nursery School

Playing Field

Allotments

Potential future links to Hertford and Ware

- School
- New / Improved pedestrian crossing
- New / Improved pedestrian and cycle crossing
- Minor Junction Improvement
- Medium Junction Improvement
- Large Junction Improvement
- Footway Improvements
- Mixed Traffic Cycling
- Scheme Under Development
- Shared Use Path
- Suggested Alternative Cycle Route
- Traffic Calming
- Walking Primary
- Walking Secondary
- Cycling Primary
- Cycling Secondary
- East Herts District Plan
- 2018 Site Allocations/
Neighbourhood Plan Allocations

Watkin's Cottages